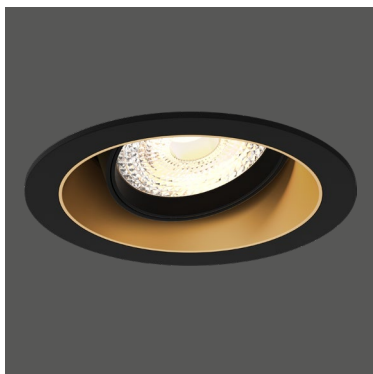


Aster Mix 2-Tone

Technical Datasheet

DOXIS
LIGHTING FACTORY



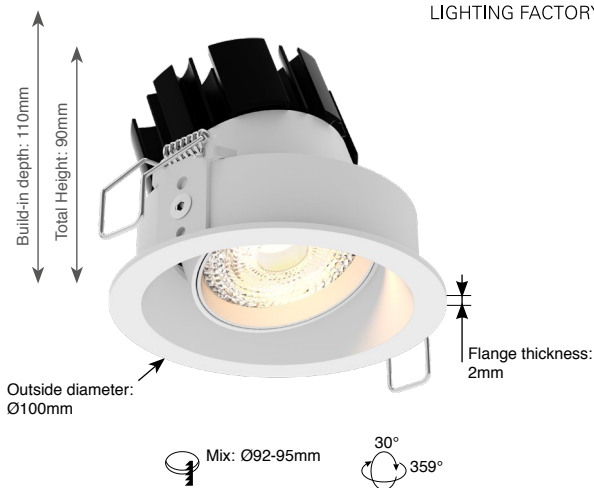
General	
Type	Recessed Downlight
Material	Aluminium
Lamp Type	COB LED
Adjustable	Yes (30°/359°)
Dimmable	Yes
Cooling	Passive
Energy Class	A++
Weight	N/A
Photobiol. Safety	RG1
Class (luminaire)	class III
Class (driver)	class II

IP20



960°C

LED



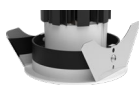
Features:

High efficiency LED Downlight, equipped with a Bridgelux or Dim-to-Warm COB LED.
High quality components.
Various colors available.

Specifications

Art. nr.	Lightsource INCLUDED	CCT - CRI	Light output* LED / System	Efficacy** LED / System	Power** LED / System (current)	Power supply INCLUDED	SDCM
1803.AA.24.927.XX-Y	Bridgelux Vero 10 LED	2700K - Ra90	1439lm / 1295lm	111lm/W / 100lm/W	12.9W / 14.8W (500mA)	Non dimmable (493.24.22)	3
1803.AA.24.930.XX-Y	Bridgelux Vero 10 LED	3000K - Ra90	1505lm / 1355lm	116lm/W / 105lm/W	12.9W / 14.8W (500mA)	Non dimmable (493.24.22)	3
1803.AA.24.940.XX-Y	Bridgelux Vero 10 LED	4000K - Ra90	1592lm / 1433lm	123lm/W / 111lm/W	12.9W / 14.8W (500mA)	Non dimmable (493.24.22)	3
1803.AA.25.927.XX-Y	Bridgelux Vero 10 LED	2700K - Ra90	1439lm / 1295lm	111lm/W / 100lm/W	12.9W / 14.8W (500mA)	1-10V & Push driver (490.25.20)	3
1803.AA.25.930.XX-Y	Bridgelux Vero 10 LED	3000K - Ra90	1505lm / 1355lm	116lm/W / 105lm/W	12.9W / 14.8W (500mA)	1-10V & Push driver (490.25.20)	3
1803.AA.25.940.XX-Y	Bridgelux Vero 10 LED	4000K - Ra90	1592lm / 1433lm	123lm/W / 111lm/W	12.9W / 14.8W (500mA)	1-10V & Push driver (490.25.20)	3
1803.AA.26.927.XX-Y	Bridgelux Vero 10 LED	2700K - Ra90	1439lm / 1295lm	111lm/W / 100lm/W	12.9W / 14.8W (500mA)	DALI dimmable (490.26.20)	3
1803.AA.26.930.XX-Y	Bridgelux Vero 10 LED	3000K - Ra90	1505lm / 1355lm	116lm/W / 105lm/W	12.9W / 14.8W (500mA)	DALI dimmable (490.26.20)	3
1803.AA.26.940.XX-Y	Bridgelux Vero 10 LED	4000K - Ra90	1592lm / 1433lm	123lm/W / 111lm/W	12.9W / 14.8W (500mA)	DALI dimmable (490.26.20)	3
1803.AA.27.927.XX-Y	Bridgelux Vero 10 LED	2700K - Ra90	1439lm / 1295lm	111lm/W / 100lm/W	12.9W / 14.8W (500mA)	Mains dimmable driver (493.27.20)	3
1803.AA.27.930.XX-Y	Bridgelux Vero 10 LED	3000K - Ra90	1505lm / 1355lm	116lm/W / 105lm/W	12.9W / 14.8W (500mA)	Mains dimmable driver (493.27.20)	3
1803.AA.27.940.XX-Y	Bridgelux Vero 10 LED	4000K - Ra90	1592lm / 1433lm	123lm/W / 111lm/W	12.9W / 14.8W (500mA)	Mains dimmable driver (493.27.20)	3
1803.AA.26.DTW.XX-Y	Bridgelux DTW LED***	3000K/1800K - Ra90	860lm / 774lm	105lm/W / 82lm/W	8.2W / 9.4W (250mA)	DALI dimmable driver (490.26.20)	3
1803.AA.27.DTW.XX-Y	Bridgelux DTW LED***	3000K/1800K - Ra90	860lm / 774lm	105lm/W / 82lm/W	8.2W / 9.4W (250mA)	Mains dimmable driver (497.27.20)	3

0000.AA.00.000.XX-Y



T - Trapezium springs

B - Boobytrap springs

0000.00.00.000.00-T

0000.00.00.000.00-B

25 - 25° Reflector - 0000.25.00.000.00-0

36 - 36° Reflector - 0000.36.00.000.00-0

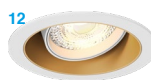
52 - 52° Reflector - 0000.52.00.000.00-0

Available colors - 0000.00.00.000.XX-0

Other RAL colors on request



Black + Gold Matt



White + Gold Matt



Gold Matt

* Power consumption/efficacy values excl. driver

**Always use AM drivers for Dim-to-Warm applications

Lumen Maintenance Bridgelux COB LED (Tc=85°C)

L70B50: >100 000 hrs	L70B20: >100 000 hrs	L70B10: >100 000 hrs
L80B50: >100 000 hrs	L80B20: >100 000 hrs	L80B10: >100 000 hrs
L90B50: >100 000 hrs	L90B20: >50 000 hrs	L90B10: >50 000 hrs

Lumen Maintenance Dim-to-warm COB LED (Tc=85°C)

L70B50: >150 000 hrs	L70B10: >125 000 hrs	L70B10: >125 000 hrs
L80B50: >100 000 hrs	L80B20: >75 000 hrs	L80B10: >75 000 hrs
L90B50: >35 000 hrs	L90B20: >25 000 hrs	L90B10: >25 000 hrs

Drivers

Name	Art. nr.	Dimensions	Description
Driver Mono non dim. 22W	493.24.22	147x44x22	Non dimmable LED Driver with adjustable output current (max. 500mA)
Driver Mono 1-10V & Push dim. 20W	490.25.20	111x52x22	Push & 1-10V dimmable LED Driver with adjustable output current (max. 500mA)
Driver Mono DALI dim. 20W	490.26.20	111x52x22	DALI dimmable LED Driver with adjustable output current (max. 500mA)
Driver Mono Mains dim. 20W	493.27.20	111x52x22	Trailing- & Leading edge dimmable LED Driver with adjustable output current (max. 500mA)
Driver "Dim-to-Warm Mono" mains	497.27.20	108x52x22	Dimmable AM LED Driver compatible with trailing-edge & leading-edge dimmers (phase cut-off)

On Request

LED with CRI Ra97
Class A LED

Options

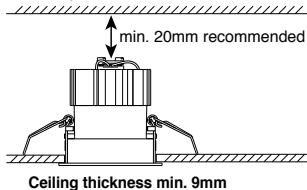
Honeycomb Grid 1808.00.00
Provides more visual comfort

Forward voltages (Tc=85°C)

Bridgelux COB LED:	23.4V(min.) - 25.9V(typ.) - 28.4V(max.)
Dim-to-Warm COB LED:	Full power 250mA: 31.4V (min.) - 34.3V(typ.) - 37V(max.)
	Max. dimming 10mA: 25.1V (min.) - 27.3V(typ.) - 29.5V(max.)

Air circulation notice:

Do not topload with insulation materials



DOXIS
LIGHTING FACTORY

Horizonlaan 30 | B-3600 Genk | Belgium
T+32 (0)89.62.15.11 | F+32 (0)89.62.15.12 | info@doxis.be
www.doxis.be



Datasheet subject to change
Update: 20/10/2021
Page 1-1